

The image features two pieces of industrial tooling against a dark blue background. The upper tool is a complex assembly with a cylindrical handle on the left and a rectangular body with several circular ports and a threaded adjustment knob on the right. The lower tool is a similar assembly, but with a more prominent cylindrical section on the left. Both tools are made of dark metal and have a polished finish. The text 'ZEPHYR TOOL GROUP LOK-FAST' is positioned in the top right corner, and 'Frangible Collar Tooling' is at the bottom.

ZEPHYR[®]
TOOL
GROUP
LOK-FAST

Frangible Collar Tooling



TOOLS ENGINEERED TO PERFORM



Hi-Lok® Type Fastener Installation Tools

Quick Release System (QRS)	04
QRS Socket Assemblies	05
L-Head Assemblies	
L-Head Assembly, Short with Extended Socket	06
L-Head Assembly, Short without Extended Socket	06
L-Head Assembly, Long with Extended Socket	07
L-Head Assembly, Long without Extended Socket	07
Straight Drive Assembly	08
Straight Drive Socket Assemblies	08
Ratchet Assemblies	
Straight Ratchet without Extended Socket	09
Straight Ratchet with Extended Socket	09
Offset Ratchet without Extended Socket	10
Offset Ratchet with Extended Socket	10
Ratchet Hand Tools	11
Glossary	11 - 12

Quick Change System

Hi-Lok® Type Fastener Tools

Quick Change System Introduction	14
Quick Change Removal Socket	15
Quick Change Installation Socket	16
Quick Change Installation, Hand Tool Assembly	17
Quick Change Removal, Hand Tool Assembly	18
Quick Change Pneumatic Tool Kits	19 - 21
Glossary	22

ZEPHYR TOOL GROUP

201 Hindry Avenue
Los Angeles, CA 90301

Tel. 310-410-4907 ■ Email: sales@zephyrtoolgroup.com ■ zephyrtoolgroup.com

ZEPHYR[®]
TOOL
GROUP



TOOLS ENGINEERED TO PERFORM



LOK-FAST

ZEPHYR TOOL GROUP

201 Hindry Avenue
Los Angeles, CA 90301
Tel. 310-410-4907 ▪ Email: sales@zephyrtoolgroup.com ▪ zephyrtoolgroup.com

ZEPHYR[®]
T O O L
G R O U P



TOOLS ENGINEERED TO PERFORM



Hi-Lok[®] Type Fastener Installation Tools

ZEPHYR TOOL GROUP

201 Hindry Avenue
Los Angeles, CA 90301
Tel. 310-410-4907 ▪ Email: sales@zephyrtoolgroup.com ▪ zephyrtoolgroup.com

Page 3
11/15/18



TOOLS ENGINEERED TO PERFORM



LOK-FAST

Quick Release System

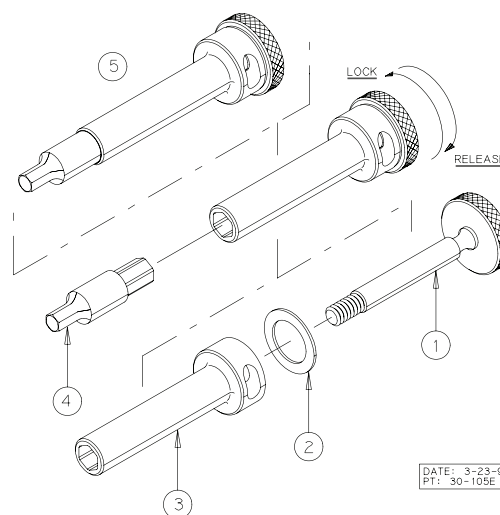
The Quick-Release System (QRS) is an innovative, proprietary system offered by LOK-FAST to install Hi-loks and other non-interference fit fasteners. QRS is a hex tip holder assembly providing a higher strength quick-change hex tip which allows the operator to change the tip key both quickly and at the work station with no additional tooling or conversion kits. This process eliminates costly down time and removes the need to return a tool to the tool crib to replace a broken hex tip.

Benefits of the Quick-Release System (QRS)

- Fewer Holders - Only One Holder for All Hex Keys
- Quick Change of Hex Keys with tool fully assembled
- No Tools or Conversion Kits Required
- Tips Will *Not* Jam in the Holder
- Sealant Contamination is Minimized
- Economical to Implement - May Be Used With Existing Drivers

Part Description

1. Retaining Shaft
2. Nylon Washer
3. Hex Tip Holder
4. Hex Tip
5. QRS Holder Assembly



How It Works:

The hex tip is held into a fitted holder by a threaded retaining shaft. The hex tip is drawn into the holder when the retaining shaft is rotated clockwise, and is expelled when shaft is rotated counterclockwise. If the hex tip breaks this action prevents the tip from being jammed into the holder.

Installation:

1. Slide retaining shaft through the back of the holder
2. Insert holder assembly into the drive gear or socket
3. Insert spring into the slot in the assembly, this will hold the retaining shaft in place.
4. The hex tip can now be inserted. Do not overtighten. The nylon washer will prevent the shaft from vibrating loose
5. Installation is now complete

To Replace Hex Key:

1. Rotate the retaining shaft until the hex tip falls out
2. Replace and tighten retaining shaft

To Replace Hex Key Size:

Follow same procedure as when replacing broken hex tip

ZEPHYR TOOL GROUP

201 Hindry Avenue
Los Angeles, CA 90301

Tel. 310-410-4907 ■ Email: sales@zephyrtoolgroup.com ■ zephyrtoolgroup.com



LOK-FAST

Quick Release System

How To Order:

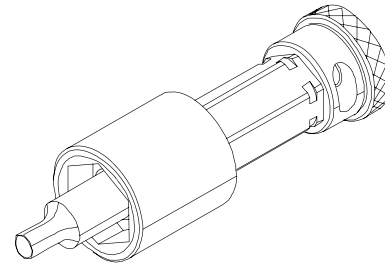
1. Determine the hex recess size of the fastener pin to be installed (column 1)
2. Determine the hex size of the driving collar to be installed onto the pin (column 2).
3. Select the socket length required. Use a dash number equal or greater than the extension required.

Example: QSA281-05-5

- socket hex size is 9/32"
- socket length 1/2"
- hex tip size is 1/16"

Part number includes the following

1. 1/2" retaining shaft
2. 1/2" holder
3. Retaining clip
4. 1/2" long extended socket with 9/32" hex recess
5. 5/64" QRS hex tip

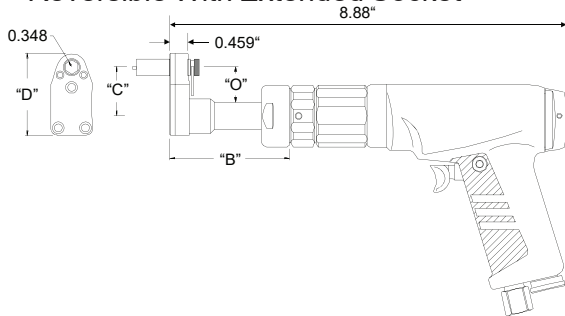


Hex Tip	Socket Hex	Complete Part #	Socket	Holder	Retaining Shaft
1/16" QRK - 5	7/32	QSA218 - (E) - 5	HS - 22 - (E)	QRH - (E)	QRS - (E)
	1/4	QSA250 - (E) - 5	HS - 25 - (E)		
	9/32	QSA281 - (E) - 5	HS - 28 - (E)		
	5/16	QSA312 - (E) - 5	HS - 31 - (E)		
	11/32	QSA343 - (E) - 5	HS - 34 - (E)		
5/64" QRK - 6	7/32	QSA218 - (E) - 6	HS - 22 - (E)	QRH - (E)	QRS - (E)
	1/4	QSA250 - (E) - 6	HS - 25 - (E)		
	9/32	QSA281 - (E) - 6	HS - 28 - (E)		
	5/16	QSA312 - (E) - 6	HS - 31 - (E)		
	11/32	QSA343 - (E) - 6	HS - 34 - (E)		
	3/8	QSA375 - (E) - 6	HS - 37 - (E)		
3/32" QRK - 8	5/16	QSA312 - (E) - 8	HS - 31 - (E)	QRH - (E)	QRS - (E)
	11/32	QSA343 - (E) - 8	HS - 34 - (E)		
	3/8	QSA375 - (E) - 8	HS - 37 - (E)		
	7/16	QSA437 - (E) - 8	HS - 43 - (E)		
1/8" QRK - 10	7/16	QSA437 - (E) - 10	HS - 43 - (E)	QRH - (E)	QRS - (E)
	9/16	QSA562 - (E) - 10	HS - 56 - (E)		
	1/2	QSA500 - (E) - 10	HS - 50 - (E)		

(E)	Socket Length
04	0.25"
05	0.50"
07	0.75"
10	1.00"
15	1.50"
20	2.00"
25	2.50"
30	3.00"



L-Head Assembly, Short Tube
Reversible With Extended Socket



To Order:

1. Determine the RPM required.
2. Determine the needed offset.
2. Determine the QRS Socket Hex Size needed.
3. Determine the length of the Required Socket.

Example: **IQLA35S22-10-5B**

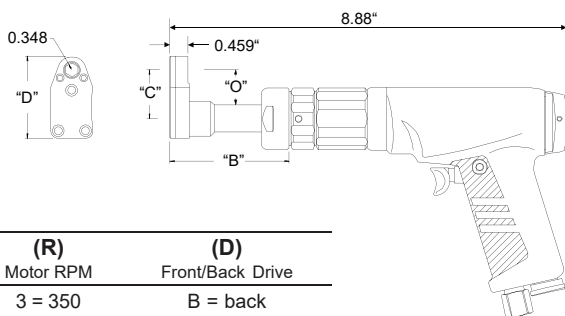
- IQLA : Master Part Number.
- 350 RPM motor.
- 5 gear L-Head.
- Short Tube Length.
- 7/32 socket.
- 1.0" extended socket, with QRS System
- Back drive.

(R) Motor RPM	(E) Socket Length	(D) Front/Back Drive
3 = 350	1 = flush	B = back
5 = 540	04 = 0.25"	() = front
	05 = 0.50"	
	07 = 0.75"	
	10 = 1.0"	
	15 = 1.5"	
	20 = 2.0"	
	25 = 2.5"	
	30 = 3.0"	

(G) Offset Number	"B"	"C"	"D"	"O"
3		1.30	2.20	0.88
4	2.125	2.00	2.80	1.70
5		2.80	3.60	2.40
7		4.30	5.10	3.90

Hex Tip	Socket Hex	Complete Tool Part #	Head Assy #
1/16 QRK - 5	7/32	IQLA(R)(G)S22 - (E) - 5(D)	IQL(G)S22 - (E) - 5
	1/4	IQLA(R)(G)S25 - (E) - 5(D)	IQL(G)S25 - (E) - 5
	9/32	IQLA(R)(G)S28 - (E) - 5(D)	IQL(G)S28 - (E) - 5
	5/16	IQLA(R)(G)S31 - (E) - 5(D)	IQL(G)S31 - (E) - 5
	11/32	IQLA(R)(G)S34 - (E) - 5(D)	IQL(G)S34 - (E) - 5
5/64 QRK - 6	7/32	IQLA(R)(G)S22 - (E) - 6(D)	IQL(G)S22 - (E) - 6
	1/4	IQLA(R)(G)S25 - (E) - 6(D)	IQL(G)S25 - (E) - 6
	9/32	IQLA(R)(G)S28 - (E) - 6(D)	IQL(G)S28 - (E) - 6
	5/16	IQLA(R)(G)S31 - (E) - 6(D)	IQL(G)S31 - (E) - 6
	11/32	IQLA(R)(G)S34 - (E) - 6(D)	IQL(G)S34 - (E) - 6
3/8 QRK - 8	3/8	IQLA(R)(G)S37 - (E) - 6(D)	IQL(G)S37 - (E) - 6
	5/16	IQLA(R)(G)S31 - (E) - 8(D)	IQL(G)S31 - (E) - 8
	11/32	IQLA(R)(G)S34 - (E) - 8(D)	IQL(G)S34 - (E) - 8
3/8 QRK - 8	3/8	IQLA(R)(G)S37 - (E) - 8(D)	IQL(G)S37 - (E) - 8
	7/16	IQLA(R)(G)S43 - (E) - 8(D)	IQL(G)S43 - (E) - 8

L-Head Assembly, Short Tube
Reversible Flush w/ Flush Drive Socket



To Order:

1. Determine the RPM required.
2. Determine the needed offset.
2. Determine the Drive Socket Hex Size needed.

Example: **IL3-5-22-S**

- 350 RPM motor
- 5 gear L-Head
- 7/32 flush socket
- Short tube length

(R) Motor RPM	(D) Front/Back Drive
3 = 350	B = back
5 = 540	() = front

(G) Offset Number	"B"	"C"	"D"	"O"
3		1.30	2.20	0.88
4	2.125	2.00	2.80	1.70
5		2.80	3.60	2.40
7		4.30	5.10	3.90

Drive Gear	Complete Part #	Head Assy #
7/32	IL(R)(G) - 22 - S	ILH(G) - 22 - S
1/4	IL(R)(G) - 25 - S	ILH(G) - 25 - S
9/32	IL(R)(G) - 28 - S	ILH(G) - 28 - S
5/16	IL(R)(G) - 31 - S	ILH(G) - 31 - S
11/32	IL(R)(G) - 34 - S	ILH(G) - 34 - S
3/8	IL(R)(G) - 37 - S	ILH(G) - 37 - S